

Absolute shocker of the week

17 December 2013



This week's Absolute shocker was sent in from a reader who had also forwarded it to their local safety regulator.

There is no acceptable reason to justify workers being on the roof of this building and walking the purlins.

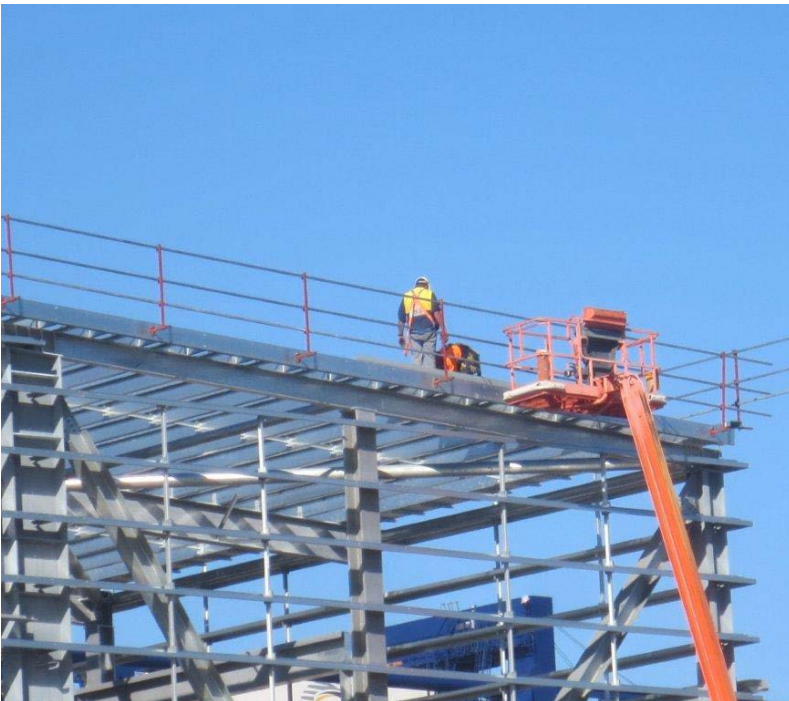
A fall from this height will almost always be fatal.

As can be seen:

- the perimeter guard railing is incomplete,
- the roof safety mesh has not been installed, nor are there safety nets fitted under the roof,
- they have not even attached their safety harnesses to the roof structure to provide fall arrest.

To get on the roof they have broken the golden rule of elevating work platform (EWP) use; **NEVER** get out of the EWP basket when elevated.

Access to this type of roof should be via a scaffold stair access tower.



More information on working at heights safely see [Compliance Code - Prevention of falls in general construction](#)

Absolute shocker of the week is published by WorkSafe Victoria to promote safer work practices in construction, utilities, mining and quarrying. It may be freely copied for such purposes.